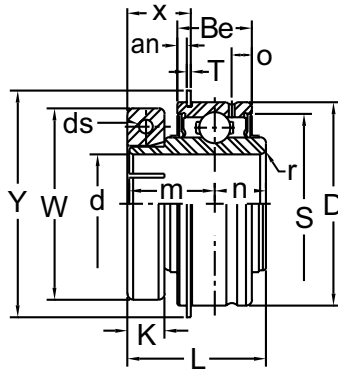




# CYLINDRICAL O.D. ACCU-LOC BALL BEARINGS

SUE 200

Concentric Locking  
 Single Cap Screw Locking Collar  
 Wide Inner Ring  
 Steel Cage  
 52100 Bearing Steel  
 w/Black Oxide Finish  
 0°F ~ 212°F  
 Contact Seal and Slinger  
 Cylindrical O.D.  
 Prelubricated / Relubricatable  
 Inch and Metric



NORMAL DUTY

Shaft Diam. (in.)	AMI Unit #	List Price	Dimensions (in.)															Basic Load Rating (lbf.)		Weight (lb.)	
			D	L	Be	r	O	n	m	W	K	an	T	Y(max)	X	S	ds(UNC)	Dynamic Cr	Static Cor		
3/4	SUE204-12	62.40	1.8504	1.299	5/8	0.059	0.150	13/32	13/16	1.724	0.374	3/32	0.042	2.075	0.715	1.614	8-32	2890	1500	0.64	
1	SUE205-16	64.50	2.0472	1.394	3/4	0.059	13/64	33/64	55/64	1.929	0.374	3/32	0.042	2.280	0.671	1.811	8-32	3150	1780	0.82	
1-1/8	SUE206-18	85.30	2.4409	1.567	7/8	0.059	7/32	5/8	7/8	2.185	0.374	1/8	0.065	2.665	0.695	2.138	8-32	4410	2540	1.04	
1-3/16	SUE206-19																				
1-1/4	SUE206-20	113.80	2.8346	1.728	15/16	0.079	7/32	11/16	1	2.421	0.433	1/8	0.065	3.095	0.760	2.500	10-24	5820	3460	1.54	
1-3/8	SUE207-22																				
1-7/16	SUE207-23	116.00	3.1496	1.976	1-3/32	0.079	1/4	3/4	1-3/16	2.520	0.433	1/8	0.065	3.410	0.870	2.728	10-24	6590	4020	2.23	
1-1/2	SUE208-24																				
1-11/16	SUE209-27	131.50	3.3465	1.976	1-3/32	0.079	1/4	3/4	1-3/16	2.913	0.433	1/8	0.065	3.606	0.870	2.925	10-24	7420	4030	2.45	
1-3/4	SUE209-28																				
1-15/16	SUE210-31	143.10	3.5433	2.071	1-1/8	0.079	19/64	3/4	1-9/32	3.189	0.571	1/8	0.095	3.799	0.978	3.138	1/4-20	7940	5220	2.87	
2	SUE211-32																				
2-3/16	SUE211-35	167.20	3.9370	2.228	1-3/16	0.098	19/64	7/8	1-5/16	3.189	0.571	1/8	0.095	4.193	0.978	3.571	1/4-20	9700	6610	3.46	
2-7/16	SUE212-39																				
			Dimensions (mm)															Basic Load Rating (kgf.)			
20	SUE204	61.30	47	33.0	15.9	1.5	3.8	10.3	20.6	43.8	9.5	2.38	1.07	52.7	18.2	41.0		1310	680	0.64	
25	SUE205	63.50	52	35.4	19.0	1.5	5.2	13.1	21.8	49.0	9.5	2.38	1.07	57.9	17.0	46.0	M4x0.7	1430	800	0.82	
30	SUE206	84.50	62	39.8	22.2	1.5	5.6	15.9	22.2	55.5	9.5	3.18	1.65	67.7	17.6	54.3		2000	1150	1.04	
35	SUE207	111.20	72	43.9	23.8	2.0	5.6	17.5	25.4	64.0	11.0	3.18	1.65	78.6	19.3	63.5		2640	1570	1.54	
40	SUE208	115.30	80	50.2	27.8	2.0	6.4	19.0	30.2	68.0	11.0	3.18	1.65	86.6	22.1	69.3	M5x0.8	2990	1830	2.23	
45	SUE209	133.20	85	50.2	27.8	2.0	6.4	19.0	30.2	74.0	11.0	3.18	1.65	91.6	22.1	74.3		3350	2090	2.45	
50	SUE210	143.80	90	52.6	28.6	2.0	7.5	19.0	32.5	81.0	14.5	3.18	2.41	96.5	24.8	79.7	M6x1	3600	2370	2.87	
55	SUE211	184.70	100	56.6	30.2	2.5	7.5	22.2	33.3	92.0	14.5	3.18	2.41	106.5	24.8	90.7	M6x1	4400	3000	3.46	
60	SUE212	199.90	110	66.6	31.8	2.5	7.5	25.4	39.7	103.0	17.4	3.18	2.41	116.6	30.9	100	M6x1.25	5350	3700	5.03	

INTERCHANGES: ER-K ER-T